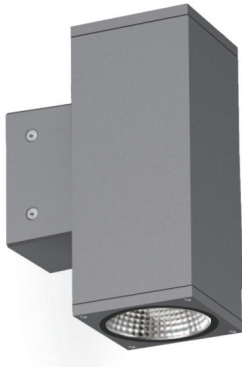


TWIN WALL CUBE COB 2×8W (ON/OFF, DALI)



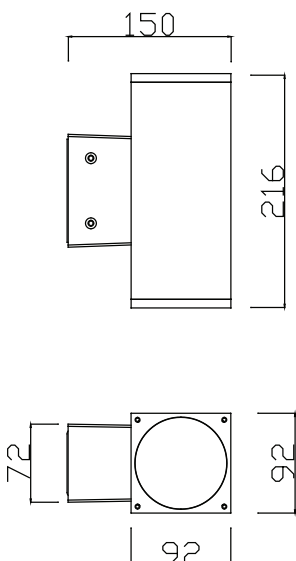
The PRECILUM TWIN WALL COB range brings the TWIN WALL CUBE COB 2×8W to the outdoor world of Wall-Mounted lighting. Bringing the flexibility to outdoor application, this lighting fixture is ideally suited to use in the building illumination. Illumination is possible only UP or common option is UP/DOWN.



PRODUCT SPECIFICATIONS

- INPUT VOLTAGE: 230V 50Hz
- EFFICIENCY: > 92 %
- POWER CONSUMPTION: 2×8W COB...18W (up to 2×890 lm)
- LIFETIME: > 50 000 hours
- THERMAL PROTECTION: yes
- LED DEVICE: CITIZEN COB
- LED VARIANTS: 3000K, 4000K, 5000K and other according requirement
- WEIGHT: 2,25 kg
- OPERATING TEMPERATURE: range -20°C to +40°C
- ENVIRONMENT: for OUTDOOR use, IP65
- HOUSING COLOR: RAL 7015 and other RAL according requirement
- MATERIALS: housing-die-cast Aluminium, cover-tempered glass
- CONTROL : ON/OFF or DALI

DIMENSIONAL DRAWINGS

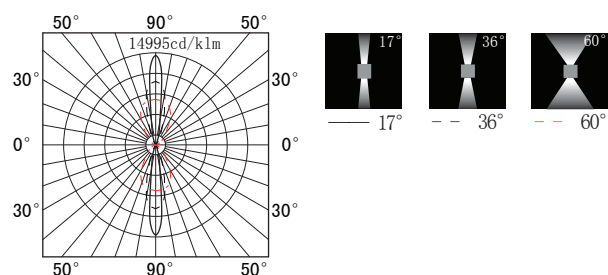


INSTALLATION PICTURE



TWIN WALL CUBE COB 2×8W (ON/OFF, DALI)

PHOTOMETRICS



ACCESSORIES

SEE WEB SITE

CONNECTION

SERIAL CONNECTION MUST BE DONE BY CERTIFIED ELECTRICIAN