

BOLLARD 21217 (ON/OFF)



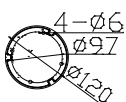
A timeless bollard offering comfortable visual guidance. Comfortable white light with no glare. Ground/floor installation. Whether our range is used to illuminate public spaces, residential gardens, paths or driveways - you will find the correct light distribution for every requirement.



PRODUCT SPECIFICATIONS

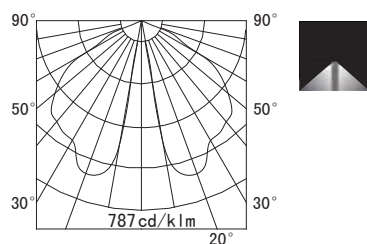
- INPUT VOLTAGE: 230V 50Hz
- EFFICIENCY: > 87 %
- POWER CONSUMPTION:
 - 1xCOB...13W (up to 836 lm)
- LIFETIME: > 70 000 hours
- THERMAL PROTECTION: yes
- LED DEVICE: CITIZEN COB
- LED VARIANTS: 3000K, 4000K, 5000K and other according requirement
- WEIGHT: 3,97 kg
- OPERATING TEMPERATURE: range -20°C to +40°C
- ENVIRONMENT: for OUTDOOR use, IP54
- HOUSING COLOR: RAL 7015 and other RAL according requirement
- MATERIALS: housing-die-cast Aluminium
- CONTROL : ON/OFF

DIMENSIONAL DRAWINGS



BOLLARD 21217 (ON/OFF)

PHOTOMETRICS



ACCESSORIES

SEE WEB SITE

CONNECTION

SERIAL CONNECTION MUST BE DONE BY CERTIFIED ELECTRICIAN