

SOPHIA 3 STAINLESS (ON/OFF)



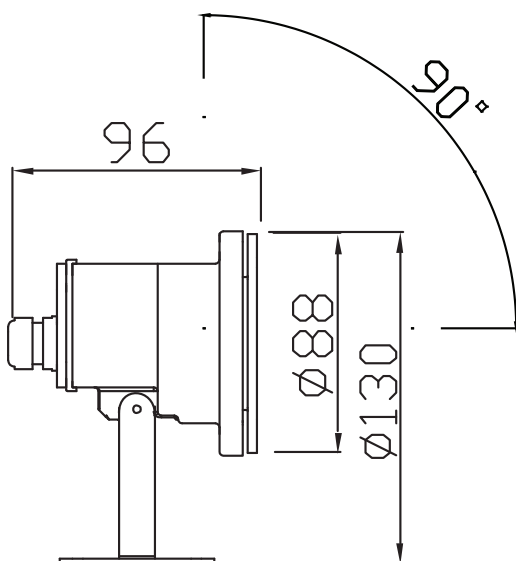
Stainless steel luminaire with high IP coverage for use in fountains and ponds. Low Voltage Supply, Class III.



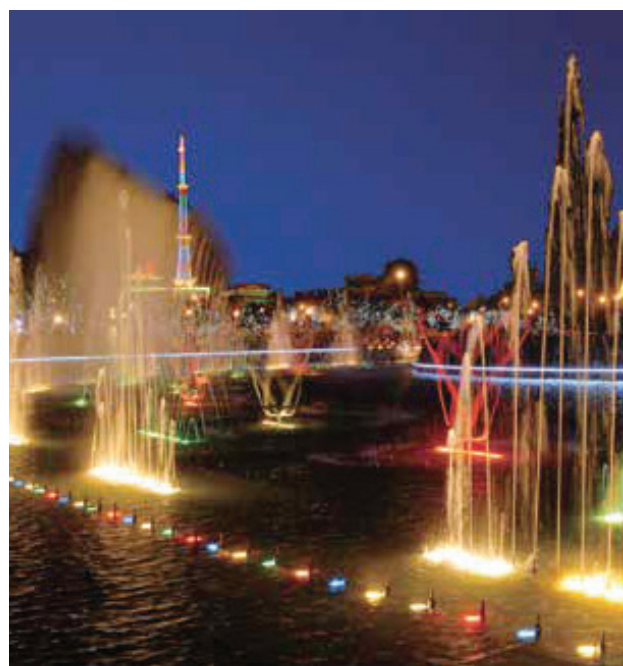
PRODUCT SPECIFICATIONS

- INPUT VOLTAGE: 24V DC
- EFFICIENCY: > 92 %
- POWER CONSUMPTION: 3x1W LED... 3,6W(up to 324lm)
- LIFETIME: > 70 000 hours
- THERMAL PROTECTION: yes
- LED DEVICE: OSRAM
- LED VARIANTS: 3000K, 4000K, 5000K and other according requirement
- WEIGHT: 0,85 kg
- OPERATING TEMPERATURE: range -20°C to +40°C
- ENVIRONMENT: for OUTDOOR use, IP68...3m
- HOUSING COLOR: stainless colour
- MATERIALS: housing-stainless steel, cover-tempered glass
- CONTROL : ON/OFF

DIMENSIONAL DRAWINGS

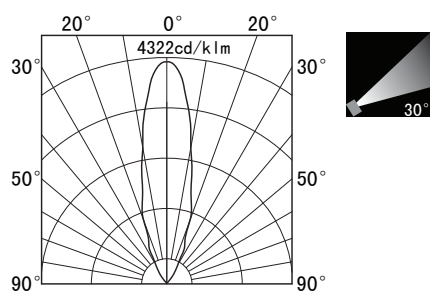


INSTALLATION PICTURE



SOPHIA 3 STAINLESS (ON/OFF)

PHOTOMETRICS



ACCESSORIES

Connection box



CONNECTION

SERIAL CONNECTION MUST BE DONE BY CERTIFIED ELECTRICIAN