



INTRODUCTION

SAVE ENERGY WITH PRECILUM

The Ground series was designed using modern simulation methods in order to obtain the highest product quality. Ground series fixtures are made of top-quality materials such as marine grade steel, high-purity glass for optical applications, and modern CREE® LEDs.

- Based on CREE® LEDs
- 230V AC / IP67
- 12-24V / IP68
- Made of 316L steel
- Power: 20W / 18W
- 5-year warranty
- CRI ≥ 80 , ≥ 90 on request
- Round or square front
- Also available with an aluminum body
- Fits with DN125 Pipe

APPLICATIONS

INGROUND MEDIUM CLIP

The PRECILUM Inground Medium CLip fixture can be used for lighting many places and objects such as:

- parks
- gardens
- squares
- premises
- plants
- exterior walls

SPECIFICATION – HIGH VOLTAGE VERSION

LIGHT COLOUR	CONFORT WHITE	WARM WHITE	NEUTRAL WHITE	COOL WHITE
Colour Temperature *	2700 ± 150 K	3000 ± 150 K	4000 ± 250 K	5000 ± 250 K
Effective Lumen Output **	1450 lm	1450 lm	1650 lm	1765 lm
Risk group****	RG1	RG1	RG2	RG2
CRI	≥ 80			
Viewing Angle [FWHM]	25°, 50°			
Input Voltage	230V AC 50Hz			
Power Consumption	20W			
Operating Temperature	-20°C ÷ +55°C			
Dimensions	Ø148 mm or 148x148 mm			
Cable Type	H07RN-F 3G1			
Cable Length	0.5 m			
IP Rating	IP67			
Load	1000 kg			
Appilance class	Class I			
IP Rating	≥ 60 000 h			

- * Other CCTs and colours available on request.
- ** Source performance in real-life conditions at Ta=25°C; includes optical losses; the tolerance of source lumen output is 5%.
- *** Approximate lifetime of LEDs declared by Cree® at Ta=25°C (for 90% of initial light output) and other electronic components.
- **** According to EN 62471:2008

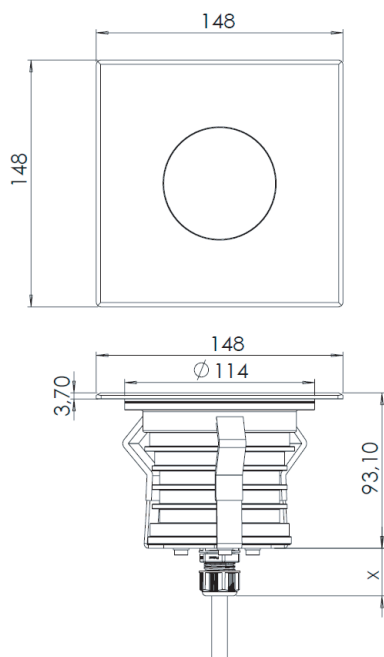
SPECIFICATION – LOW VOLTAGE VERSION

LIGHT COLOUR	CONFORT WHITE	WARM WHITE	NEUTRAL WHITE	COOL WHITE
Colour Temperature *	2700 ± 150 K	3000 ± 150 K	4000 ± 250 K	5000 ± 250 K
Effective Lumen Output **	1450 lm	1550 lm	1650 lm	1765 lm
Risk group****	RG1	RG1	RG2	RG2
CRI	≥ 80			
Viewing Angle [FWHM]	25°, 50°			
Input Voltage	12V/24V DC			
Power Consumption	18W			
Operating Temperature	-20°C ÷ +55°C			
Dimensions	Ø148 mm			
Cable Type	H07RN-F 2X1.5			
Cable Length	0.5 m			
IP Rating	IP68			
Load	1000 kg			
Appilance class	Class III			
IP Rating	≥ 60 000 h			

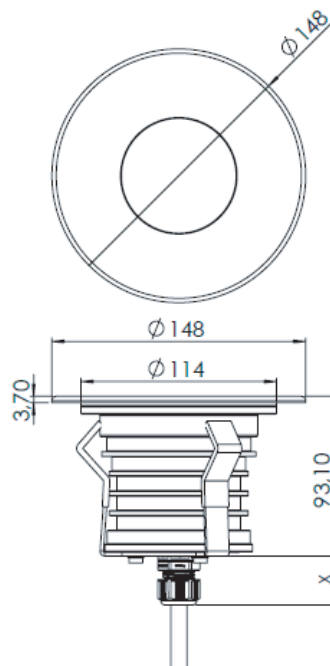
- * Other CCTs and colours available on request.
- ** Source performance in real-life conditions at Ta=25°C; includes optical losses; the tolerance of source lumen output is 10%.
- *** Approximate lifetime of LEDs declared by Cree® at Ta=25°C (for 90% of initial light output) and other electronic components.
- **** According to EN 62471:2008

DIMENSIONS [MM]

SQUARE FRONT



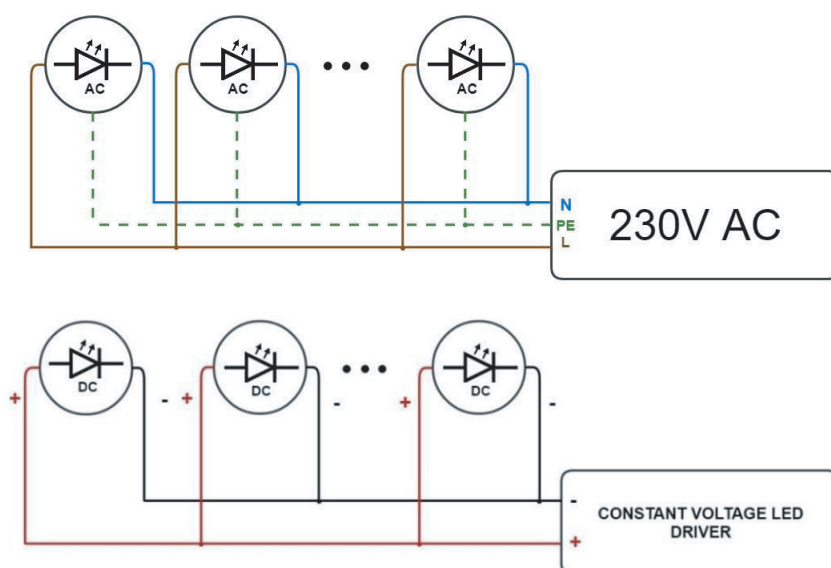
ROUND FRONT



ELECTRICAL INSTALLATION

CONNECTION

Connecting to the power supply should be done when the power supply is off.



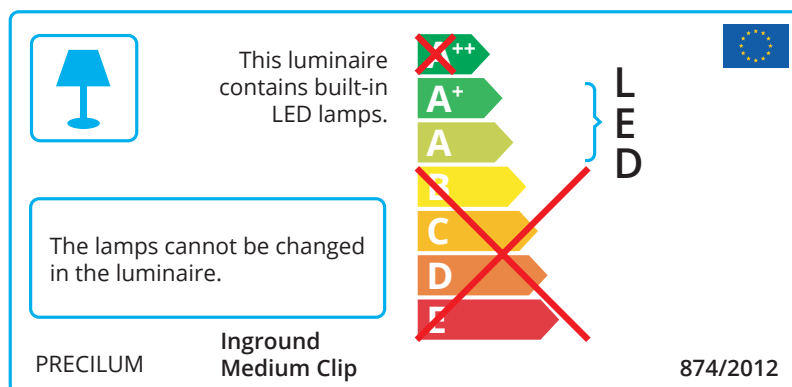
ORDER CODE FORMAT

EXPLANATION

		POWER LV - 18 W HV - 20 W		FWHM ANGLE 25 - 25 degrees 50 - 50 degrees		MATERIAL OF THE FRONT / BODY SA - Steel front and aluminium body SS - Steel front and body						
INGROUND MEDIUM CLIP	-	20	-	VW	-	25	-	SQ	-	SA	-	LV
FAMILY				CCT VW - 2700K WW - 3000K NW - 4000K CW - 5000K				FRONT PLATE SQ – Square RD – Round				TYPE OF POWER SUPPLY LV - 12V/24V DC HV - 230V AC, 50Hz

ENERGY LABEL

INGROUND MEDIUM CLIP



ENVIRONMENTAL CAUTION

CAUTION!



It is prohibited to dispose of obsolete and waste electrical and electronic equipment together with regular household wastes. They should be properly sorted and recycled. Old electrical and electronic equipment should be returned to a waste collection point established by a waste management service. Waste electrical and electronic equipment can be broken down to base materials and then recycled. For more information regarding waste management please contact your local authorities, waste management service or the seller of electrical and electronic devices.