



## INTRODUCTION

### SAVE ENERGY WITH PRECILUM

The RECUBE SERIES was designed using modern simulation methods in order to obtain the highest product quality. RECUBE series fixtures are made of top quality materials and new CREE LEDs<sup>®</sup>.

- Based on CREE<sup>®</sup> LEDs
- 230V AC / IP65
- Made of aluminium protected by painting
- Power: 6W
- 5 year warranty
- CRI  $\geq 80$ ,  $\geq 90$  on request
- Another color on request

## APPLICATIONS

### RECUBE MINI

The PRECILUM RECUBE MINI fixture can be used for lighting many places and objects such as:

- stairs
- corridors
- terraces
- shopping centers
- premises
- gardens

## SPECIFICATION

LIGHT COLOUR	WARM WHITE	NEUTRAL WHITE
Colour Temperature *	3000 $\pm$ 150 K	4000 $\pm$ 250 K
Source Lumen Output**	500 lm	500 lm
Risk group*	RG1	
CRI*	$\geq 80$	
Input Voltage	230V AC 50Hz	
Power Consumption	4,6 W	
Operating Temperature	-20°C ÷ +55°C	
Dimensions	95x95 mm	
Cable Type	H05RN-F 3G1	
Cable Length	0,2 m	
IP Rating	IP65	
Appliance Class	Class 1	
Lifetime ***	$\geq 60\,000$ h	

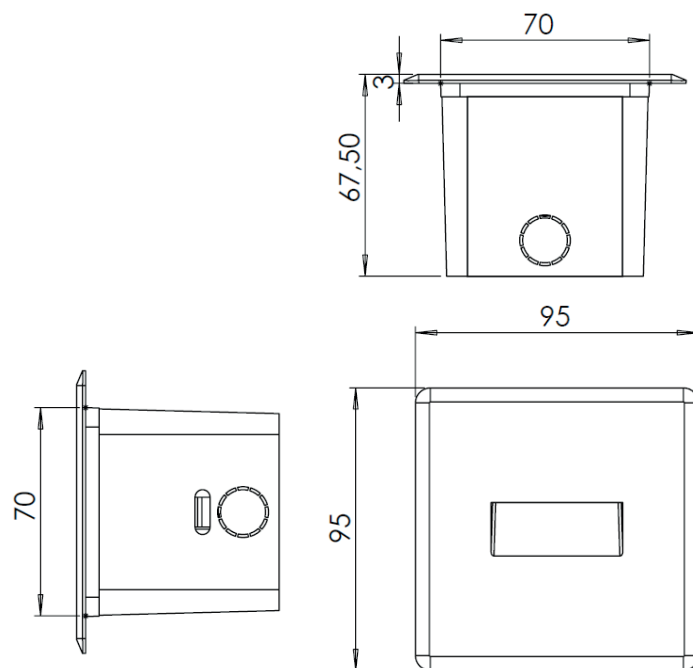
\* Other CRI, CCTs and colours available on request.

\*\* Source performance in real life conditions at Ta=25°C; includes optical losses; the tolerance of source lumen output is 10%.

\*\*\* Approximate lifetime of LEDs declared by Cree<sup>®</sup> at Ta=25°C (for 90% of initial light output) and other electronic components.

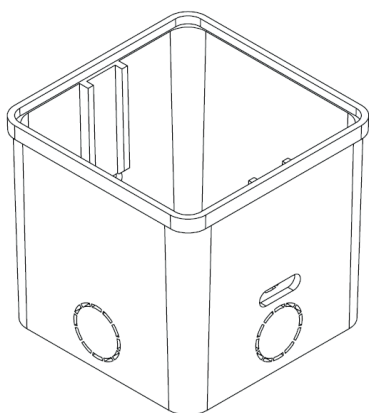
### DIMENSIONS [MM]

#### SQUARE FRONT

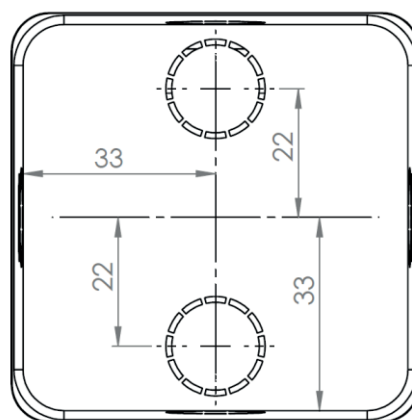


### ACCESSORIES

#### RECUBE CASE



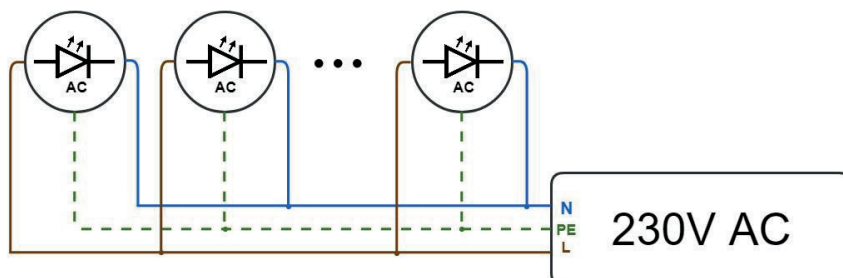
#### RECUBE CASE (BOTTOM SIDE)



## ELECTRICAL INSTALLATION

### CONNECTION

Connecting to the power supply should be done when the power supply is off.



## ORDER CODE FORMAT

### EXPLANATION

	POWER		FRONT COLOR		MATERIAL OF THE FRONT / BODY	
	HV - 5 W		BM - BLACK MAT		A - Aluminum	
			A - ANTRACYT		P - PC Polycarbonate	
<b>RECUBE MINI</b>	<b>- 5 -</b>	<b>VW -</b>	<b>BM -</b>	<b>SQ -</b>	<b>AP -</b>	<b>HV</b>
<b>FAMILY</b>		<b>CCT</b>		<b>FRONT PLATE</b>		<b>SUPPLY VOLTAGE</b>
		WW - 3000K		SQ - SQUARE		HV - 230V AC, 50Hz
		NW - 4000K				

## ENVIRONMENTAL CAUTION

### CAUTION!



It is prohibited to dispose of obsolete and waste electrical and electronic equipment together with regular household wastes. They should be properly sorted and recycled. Old electrical and electronic equipment should be returned to a waste collection point established by a waste management service. Waste electrical and electronic equipment can be broken down to base materials and then recycled. For more information regarding waste management please contact your local authorities, waste management service or the seller of electrical and electronic devices.