



## INTRODUCTION

### SAVE ENERGY WITH PRECILUM

The RECUBE SERIES was designed using modern simulation methods in order to obtain the highest product quality. RECUBE series fixtures are made of top quality materials and new CREE LEDs®.

- Based on CREE® LEDs
- 230V AC / IP65
- Made of aluminium protected by painting
- Power: 9.8W
- 5 year warranty
- CRI ≥ 80, ≥ 90 on request
- Another color on request

## APPLICATIONS

### RECUBE STANDARD

The PRECILUM RECUBE STANDARD fixture can be used for lighting many places and objects such as:

- stairs
- corridors
- terraces
- shopping centers
- premises
- gardens

## SPECIFICATION

LIGHT COLOUR	WARM WHITE	NEUTRAL WHITE
Colour Temperature *	3000 ± 150 K	4000 ± 250 K
Source Lumen Output**	1000 lm	1000 lm
Risk group*	RG1	
CRI*	≥ 80	
Input Voltage	230V AC 50Hz	
Power Consumption	9,8 W	
Operating Temperature	-20°C ÷ +55°C	
Dimensions	190x95 mm	
Cable Type	H05RN-F 3G1	
Cable Length	0,2 m	
IP Rating	IP65	
Appliance Class	Class 1	
Lifetime ***	≥ 60 000 h	

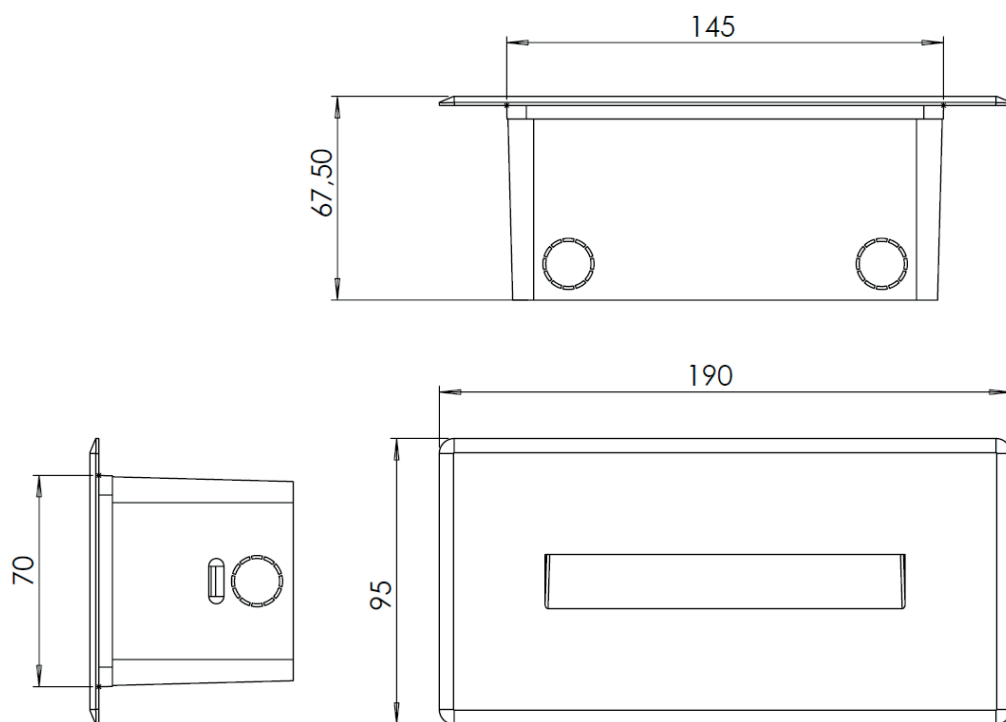
\* Other CRI, CCTs and colours available on request.

\*\* Source performance in real life conditions at Ta=25°C; includes optical losses; the tolerance of source lumen output is 10%.

\*\*\* Approximate lifetime of LEDs declared by Cree® at Ta=25°C (for 90% of initial light output) and other electronic components.

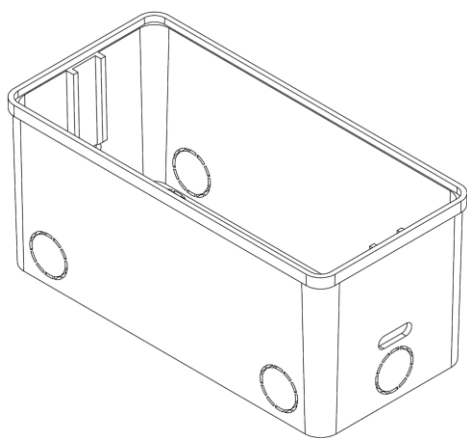
### DIMENSIONS [MM]

#### SQUARE FRONT

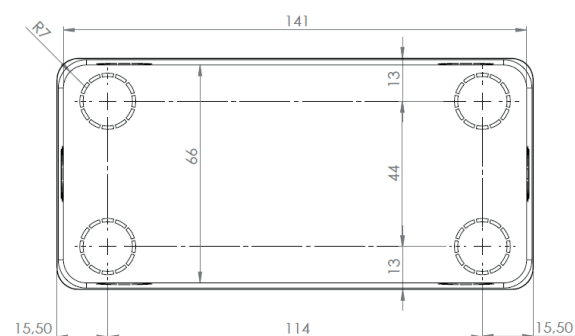


### ACCESORIES

#### RECUBE CASE



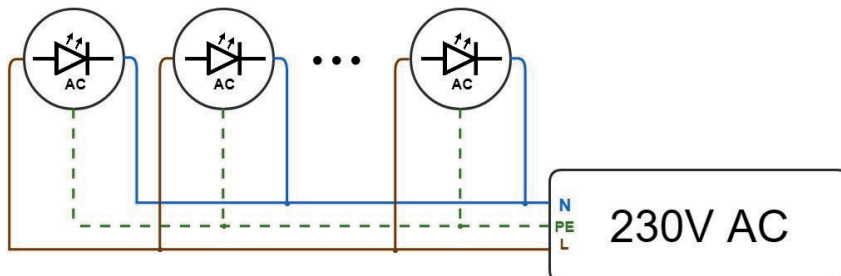
#### RECUBE CASE (BOTTOM SIDE)



## ELECTRICAL INSTALLATION

## CONNECTION

Connecting to the power supply should be done when the power supply is off.



## ORDER CODE FORMAT

### EXPLANATION

RECUBE STANDARD	POWER	FRONT COLOR	MATERIAL OF THE FRONT / BODY			
	HV - 10 W	BM - BLACK MAT A - ANTRACYT	A - Aluminum P - PC Polycarbonate			
FAMILY	10	VW	BM	SQ	AP	HV
	CCT	FRONT PLATE	SUPPLY VOLTAGE			
	WW - 3000K NW - 4000K	SQ - SQUARE	HV - 230V AC, 50Hz			

## ENVIRONMENTAL CAUTION

## CAUTION!



It is prohibited to dispose of obsolete and waste electrical and electronic equipment together with regular household wastes. They should be properly sorted and recycled. Old electrical and electronic equipment should be returned to a waste collection point established by a waste management service. Waste electrical and electronic equipment can be broken down to base materials and then recycled. For more information regarding waste management please contact your local authorities, waste management service or the seller of electrical and electronic devices.