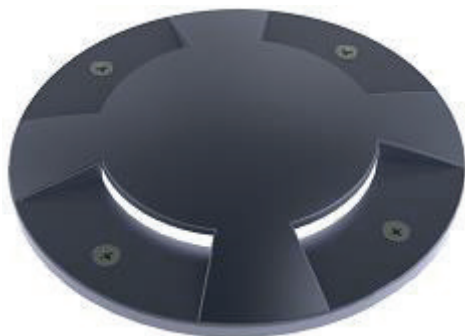


# INGROUND PATH MEDIUM ALU

## INGROUND PATH SERIES

**PRECILUM®**  
SPECIAL LED LIGHTING SOLUTIONS



## INTRODUCTION

### SAVE ENERGY WITH PRECILUM

The drive-over PRECILUM INGROUND PATH fixtures are perfect for lighting car parks and driveways. Due to the high resistance rating, they can easily carry loads imposed by vehicles weighing up to 0.8 tons.

- 230V AC
- Made of aluminum ( 316L on request)
- Power: 5.5W
- IP67
- Working load: 500 kg for the ALU version and 800 kg for the steel version
- 3 step dimming\
- 5 year warranty

## APPLICATIONS

### INGROUND PATH MEDIUM ALU

The PRECILUM INGROUND PATH MEDIUM ALU fixture can be used for lighting many places and objects such as:

- premises
- gardens
- parks
- terraces
- car parks
- squares

## SPECIFICATION

LIGHT COLOUR	WARM WHITE
Colour Temperature *	3000 ± 150 K
Effective Source Lumen Output**	460 lm
CRI	≥ 80
Input Voltage	230V AC 50Hz
Power Consumption	5,5W
Operating Temperature	-20°C ÷ +55°C
Dimensions	Ø 169 mm
Cable Type	H07RN-F 3G1
Cable Length	1.5 m
IP Rating	IP67
Lifetime ***	≥ 60 000 h

\* Other CCTs and colours available on request.

\*\* Source performance in real life conditions at Ta=25°C; includes optical losses; the tolerance of source lumen output is 5%.

\*\*\* Approximate lifetime of LEDs declared by Cree® at Ta=25°C (for 90% of initial light output) and other electronic components.

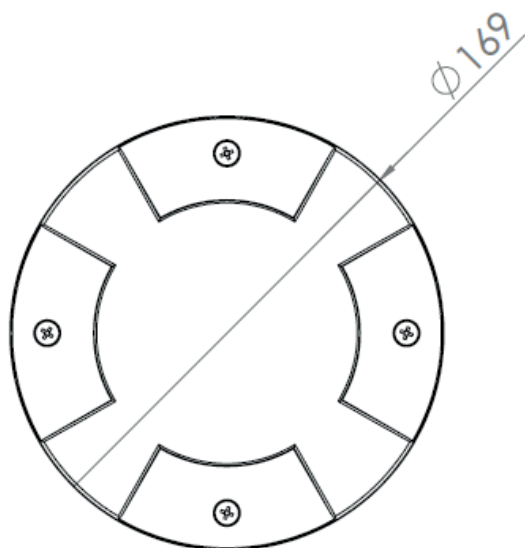
# INGROUND PATH MEDIUM ALU

INGROUND PATH SERIES

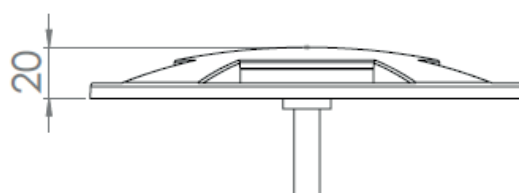
**PRECILUM**<sup>®</sup>  
SPECIAL LED LIGHTING SOLUTIONS

## DIMENSIONS [MM]

TOP

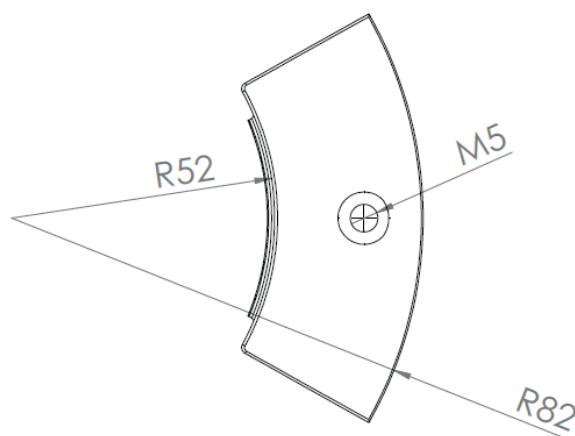


SIDE



## ACCESSORIES

INGROUND PATH MEDIUM PLUG



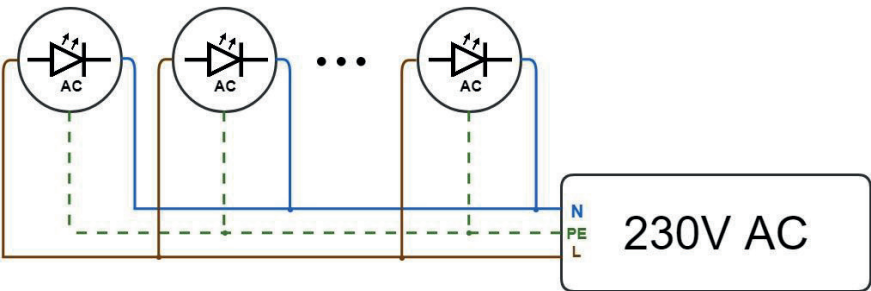
# INGROUND PATH MEDIUM ALU

## INGROUND PATH SERIES

## ELECTRICAL INSTALLATION

### CONNECTION

Connecting to the power supply should be done when the power supply is off.



## ORDER CODE FORMAT

### EXPLANATION

	POWER		NUMBER OF SIDES OPEN		MATERIAL OF THE FRONT / BODY
			4 - 4 sides open		A - Aluminum S - Steel
<b>INGROUND PATH</b>	<b>- 5,5 -</b>	<b>VW</b>	<b>- 4 -</b>	<b>RD</b>	<b>- AA - HV</b>
<b>FAMILY</b>		<b>CCT</b>		<b>FRONT PLATE</b>	<b>SUPPLY VOLTAGE</b>
		WW - 3000K		RD - Round	HV - 230V AC, 50Hz

## ENVIRONMENTAL CAUTION

### CAUTION!



It is prohibited to dispose of obsolete and waste electrical and electronic equipment together with regular household wastes. They should be properly sorted and recycled. Old electrical and electronic equipment should be returned to a waste collection point established by a waste management service. Waste electrical and electronic equipment can be broken down to base materials and then recycled. For more information regarding waste management please contact your local authorities, waste management service or the seller of electrical and electronic devices.