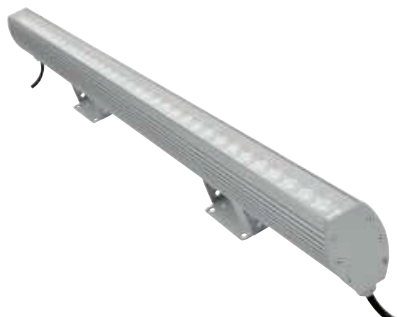


TRILOBIT RGB/RGBW LED linear - luminaire



TRILOBIT RGB/RGBW - LED surface-mount light line for static or dynamic surface illumination, for indoor and mainly for outdoor use. The linear fixture Trilobit RGB/RGBW utilises the latest OSRAM LED technology. The refined thermal management system incorporates a sleek and robust heat sink directly into the fixture to ensure maximum heat transfer and long LED life. This linear module bringing the flexibility to outdoor application. It is ideally suited to use in facade illumination, and IP66 ensures safe operation in even the most demanding areas. Available lengths 300, 600, 900, 1200 mm as standard.

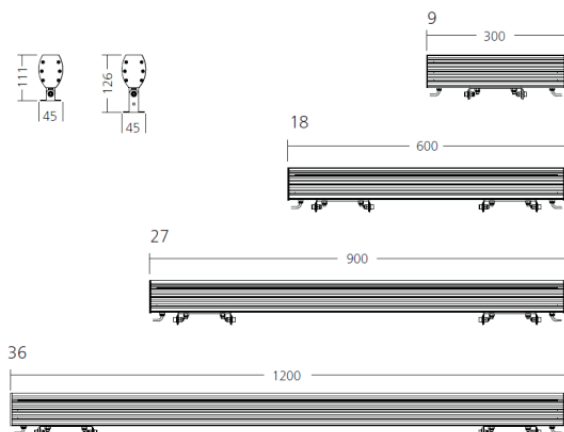


PRODUCT SPECIFICATIONS

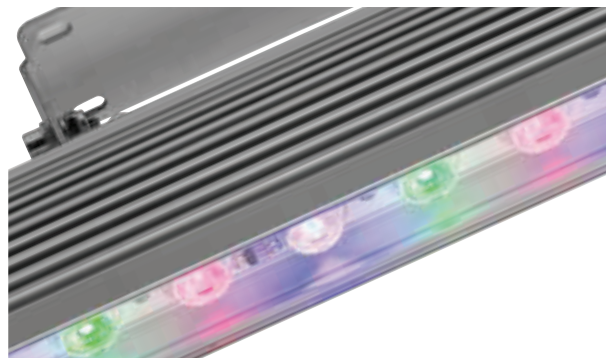
- INPUT VOLTAGE: 48V DC (LOW VOLTAGE)
- EFFICIENCY: > 92%
- POWER CONSUMPTION:

L = 300 mm	max. 13 W	L = 600 mm	max. 27 W
L = 900 mm	max. 40 W	L = 1200 mm	max. 54 W
- LIFETIME: > 70 000 hours
- THERMAL PROTECTION: yes
- LED DEVICE: OSRAM high power LEDs
- LED VARIANTS: RGB, RGBW, RGBA and other according requirement
- WEIGHT: 0,8 kg, 1,9 kg, 3,0 kg, 3,9 kg
- OPERATING TEMPERATURE: range -20 °C to +40°C
- ENVIRONMENT: for OUTDOOR use, IP66
- MATERIALS: housing-die-cast Aluminium, cover-tempered glass
- CONTROL: DMX 512 dimming control, RDM protocol for adresssing

DIMENSIONAL DRAWINGS



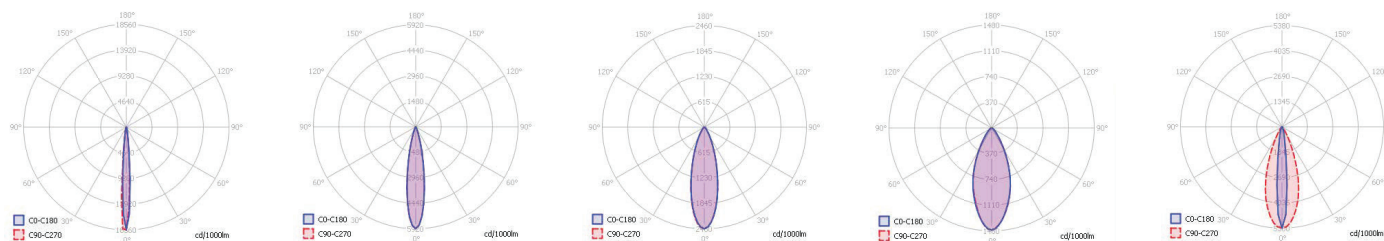
PICTURE



TRILOBIT RGB/RGBW LED linear - luminaire

PHOTOMETRICS

- Variants: SPOT, NARROW, MEDIUM, WIDE, FLOOD, OVAL, ASSYMETRIC



ACCESSORIES

- See WEB site Constant Voltage power supply 230/48V, touch panel DMX, ect.

CONNECTION

