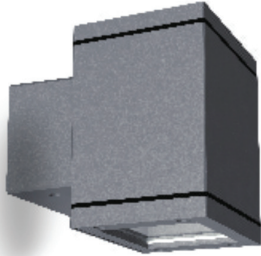


TWIN WALL CUBE 1x9 LED (ON/OFF)



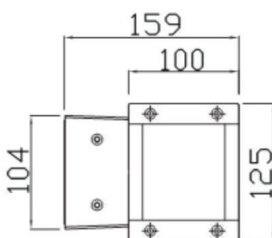
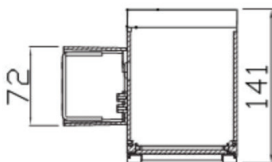
The PRECILUM TWIN WALL range brings the TWIN WALL CUBE 1x9 LED to the outdoor world of Wall-Mounted lighting. Bringing the flexibility to outdoor application, this lighting fixture is ideally suited to use in the building illumination. Illumination is possible only UP or common option is UP/DOWN.



PRODUCT SPECIFICATIONS

- INPUT VOLTAGE: 230V 50Hz
- EFFICIENCY: > 92 %
- POWER CONSUMPTION: 9x1W LED...11W (up to 1089 lm)
- LIFETIME: > 50 000 hours
- THERMAL PROTECTION: yes
- LED DEVICE: CITIZEN COB
- LED VARIANTS: 3000K, 4000K, 5000K and other according requirement
- WEIGHT: 1,55 kg
- OPERATING TEMPERATURE: range -20°C to +40°C
- ENVIRONMENT: for OUTDOOR use, IP65
- HOUSING COLOR: RAL 7015 and other RAL according requirement
- MATERIALS: housing-die-cast Aluminium, cover-tempered glass
- CONTROL : ON/OFF

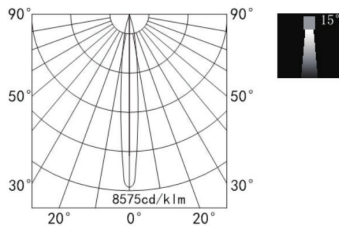
DIMENSIONAL DRAWINGS



TWIN WALL CUBE 1×9 LED (ON/OFF)

PHOTOMETRICS

■ Variants: 5°, 8°, 15°, 30°, 60°



ACCESSORIES

SEE WEB SITE

CONNECTION

SERIAL CONNECTION MUST BE DONE BY CERTIFIED ELECTRICIAN