

SOPHIA 30 WHITE (ON/OFF, DALI, DMX)



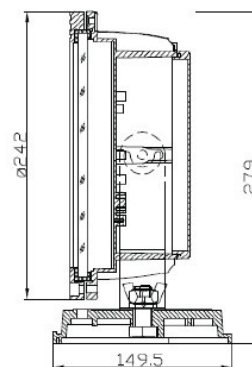
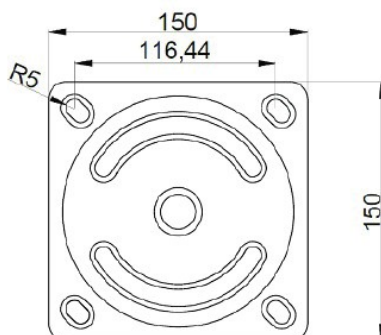
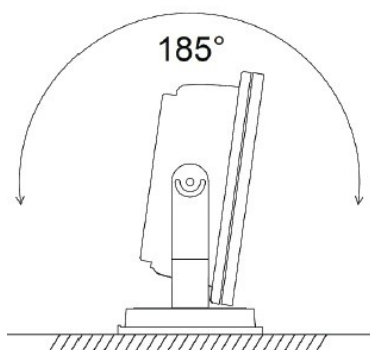
The stylishly modern and unassuming exterior of SOPHIA 24 WHITE houses state-of-the-art LED technology and made using the highest quality materials and construction methods. Bringing the flexibility to outdoor application, this powerful lighting fixture is ideally suited to use in landscape and building illumination, and IP66 ensures safe operation in even the most demanding areas.



PRODUCT SPECIFICATIONS

- INPUT VOLTAGE: 230V AC/50Hz
- POWER CONSUMPTION: 45W (up to 4200lm)
- LIFETIME: > 70 000 hours
- THERMAL PROTECTION: yes
- LED DEVICE: OSRAM high power LEDs
- LED VARIANTS: 2700K, 3000K, 4000K, 5700K and other according requirement
- WEIGHT: 4,5 kg
- OPERATING TEMPERATURE: range -20°C to +40°C
- ENVIRONMENT: for OUTDOOR use, IP66
- MATERIALS: housing-die-cast Aluminium, cover-tempered glass
- CONTROL: ON/OFF or DALI

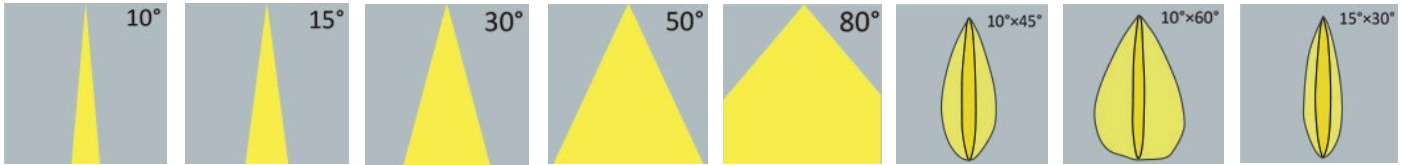
DIMENSIONAL DRAWINGS



SOPHIA 24 WHITE (ON/OFF, DALI, DMX)

PHOTOMETRICS

■ Variants:

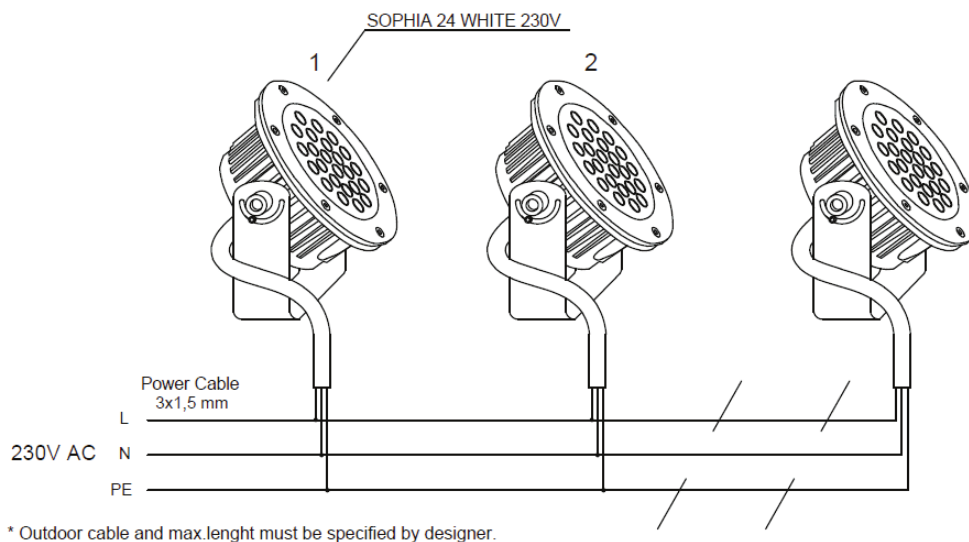


ACCESSORIES

■ See website

CONNECTION

■ See instruction manual



Maximum loading of automatic circuit breakers in relation to inrush current

Automatic circuit breaker type	C10	C13	C16	C20	B10	B13	B16	B20	Inrush current	
Installation Ø	1.5 mm ²	1.5 mm ²	1.5 mm ²	2.5 mm ²	1.5 mm ²	1.5 mm ²	1.5 mm ²	2.5 mm ²	I _{max}	Time
SOPHIA 24 WHITE	15	22	29	35	8	11	15	18	25 A	250 µs

This are max. values calculated out of inrush current! Please consider not to exceed the maximum rated continuous current of the circuit breaker.

Calculation uses typical values from ABB series S200 as a reference.

Actual values may differ due to used circuit breaker types and installation environment.