

### SOPHIA QUATTRO 7 RGBW



The SOPHIA QUATTRO 7 RGBW offers a high light output from the latest LED multichip technology, along with a full range of precision optics. With an IP Rating of 66 this product is ideal for outdoor lighting applications offering solutions to many landscape lighting scenarios.

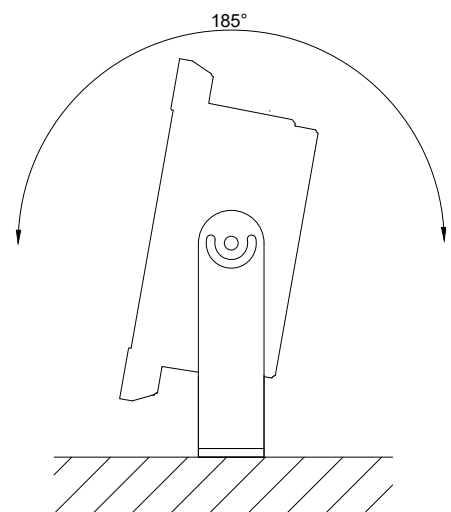
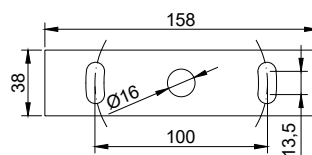
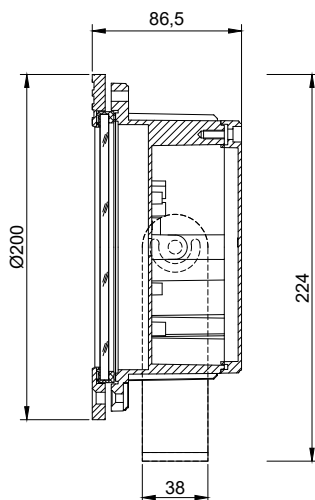
Bringing the flexibility to outdoor application, this lighting fixture is ideally suited to use in building illumination, and IP66 ensures safe operation in even the most demanding areas.



#### PRODUCT SPECIFICATIONS

- INPUT VOLTAGE: 24V-48V DC
- EFFICIENCY: > 93 %
- POWER CONSUMPTION: 28W (current 350mA/channel) / 42W (current 500mA/channel)
- LIFETIME: L70 / 100 000 hours
- THERMAL PROTECTION: yes
- LED VARIANTS: RGBW
- WEIGHT: 2,9 kg
- DIMENSION: According dimensional drawing
- OPERATING TEMPERATURE: range -20°C to +40°C
- ENVIRONMENT: for OUTDOOR use IP66
- MATERIALS: Housing - die-cast Aluminium (RAL7015), Cover - tempered glass, Aluminium ring (RAL7015)
- CONTROL: DMX/RDM electronic

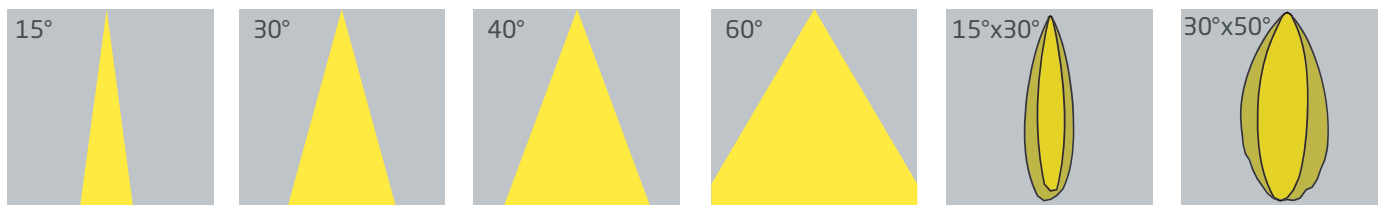
#### DIMENSIONAL DRAWINGS



### SOPHIA QUATTRO 7 RGBW

#### PHOTOMETRICS

■ Variants: 15°; 30°; 40°; 60°; 15°x30°; 30°x50°

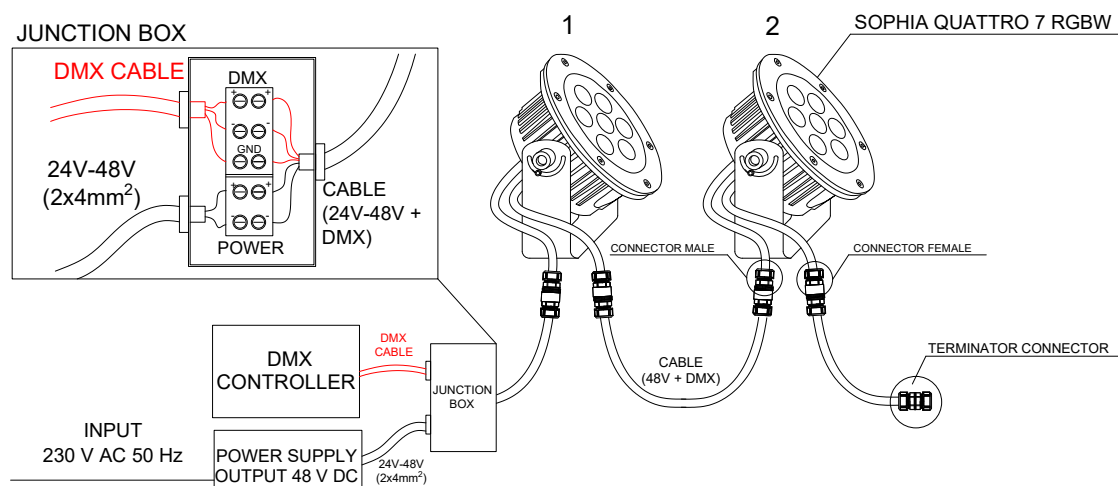


#### ACCESSORIES

■ See website - ACCESSORIES

#### CONNECTION

■ Connector version



■ Open cable version

