

## SOPHIA 15 WHITE LED



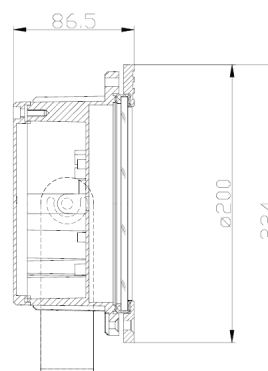
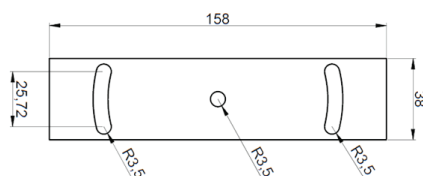
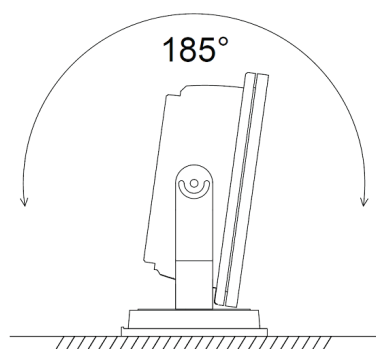
The stylishly modern and unassuming exterior of SOPHIA 15 WHITE houses state-of-the-art LED technology and made using the highest quality materials and construction methods. Bringing the flexibility to outdoor application, this powerful lighting fixture is ideally suited to use in landscape and building illumination, and IP66 ensures safe operation in even the most demanding areas.



### PRODUCT SPECIFICATIONS

- INPUT VOLTAGE: 230VAC/50Hz or 48V DC (LOW VOLTAGE)
- EFFICIENCY: > 92 %
- POWER CONSUMPTION: 15 LEDs ... 23W (up to 1900 lm, option 30W available)
- LIFETIME: > 70 000 hours
- THERMAL PROTECTION: yes
- LED DEVICE: OSRAM high power LEDs
- LED VARIANTS: 3000K, 4000K, 5700K and other according requirement
- WEIGHT: 2,8 kg
- OPERATING TEMPERATURE: range -20°C to +40°C
- ENVIRONMENT: for OUTDOOR use, IP66
- MATERIALS: housing-die-cast Aluminium, cover-tempered glass
- CONTROL: ON/OFF or DALI

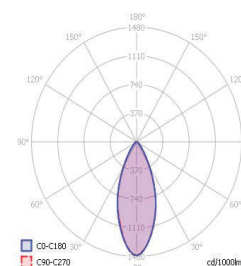
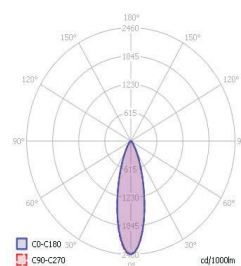
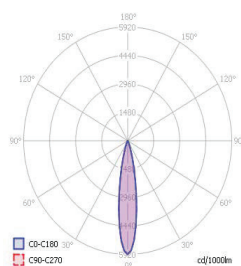
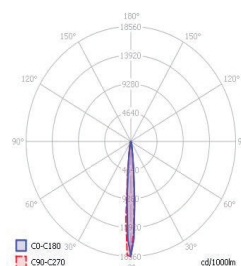
### DIMENSIONAL DRAWINGS



## SOPHIA 15 WHITE LED

### PHOTOMETRICS

- Variants: SPOT, NARROW, MEDIUM, WIDE, FLOOD, OVAL, ASSYMETRIC

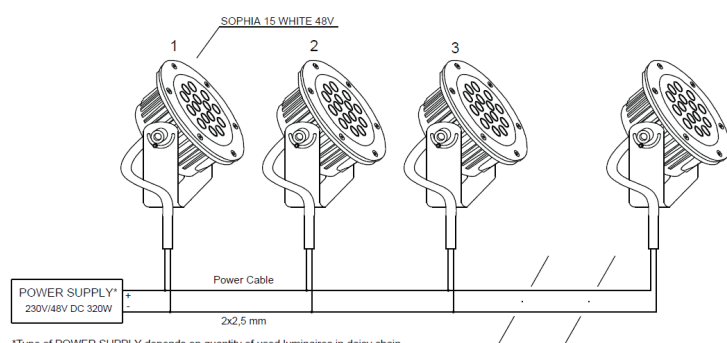


### ACCESSORIES

- See WEB site. Constant Voltage power supply 230/48V, shield to eliminate glare, ect.

### CONNECTION

- Option 48V DC



- Option 230V AC

