

## SOPHIA 31RGBW (DMX)



SOPHIA 31 RGBW exterior luminaire with high-power OSRAM LED TECHNOLOGY. Passive cooling of LED with optimised heat sink geometry. No multiple shadows, energy-efficient LEDs with very good colour rendering. The SOPHIA 31 RGBW represents a combination of a balanced design and technology from a Czech manufacturer. The use of quality materials and precision manufacturing offers a professional lighting solution. OSRAM LED's with a life expectancy of 100,000 hrs give a choice of fantastic illumination. The attractive and compact design provides a truly versatile lighting system. It is ideally suited to use in facade illumination and Architectural monuments illumination.



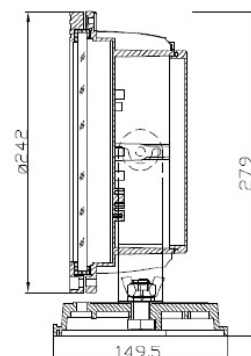
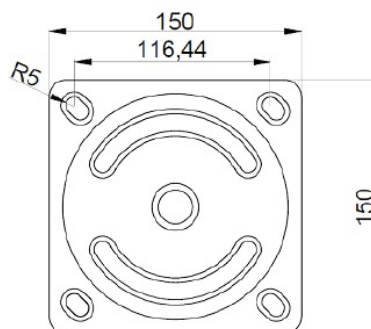
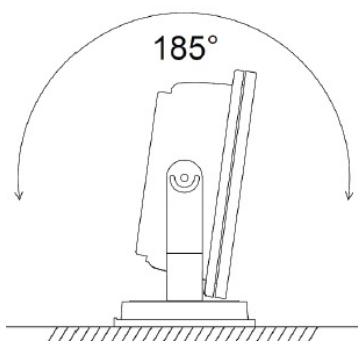
RGBW



### PRODUCT SPECIFICATIONS

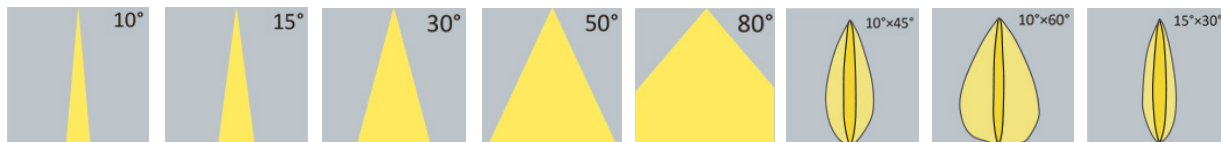
- INPUT VOLTAGE: 230V 50Hz
- POWER CONSUMPTION: max. 50 Watt
- LIFETIME: L70 / 100 000 hours
- THERMAL PROTECTION: yes
- LUMEN OUTPUT: Red-570lm, Green-1490lm, Blue-480lm, White-1570lm
- LED VARIANTS: RGBW, RGBA (R-660nm, G-521nm, B-465nm, Wht-3000K or 4000K)
- WEIGHT: 4,5 KG
- DIMENSION: see 2D drawing
- OPERATING TEMPERATURE: range -25°C to +40°C
- ENVIRONMENT: for outdoor IP66
- MATERIALS: housing-die cast Aluminium, cover-tempered glass
- CONTROL: DMX 512 dimming control (RDM)

### DIMENSIONAL DRAWINGS



## SOPHIA 31 RGBW (DMX)

### PHOTOMETRICS



### ACCESSORIES TO BE DEFINED

### CONNECTION

230V 50Hz + DMX 512

